



Company Profile

SS-01010011-Capability Statement

South Seas
2024-01-23

Document Type

Company Profile




Preface & Legal

This article contains **IMPORTANT** & **CONFIDENTIAL** business, technology information and editing copyright, which are reserved by South Seas Group (AUS) Pty Ltd., South Seas Technologies (Liaoning) Co., Ltd and South Seas Industries (Suzhou) Co., Ltd. Copying, reproducing, extracting or related behaviour by any unauthorized third-party(ies), individual(s) or organization(s) will be seen as illegal acts, and the Company reserves the legitimate right to litigation that has enacted the information, according to the relevant laws of the People's Republic of China and the Commonwealth of Australia.

Revision Control

Revision	Status	Date	Detail of Changes	Prepared By	Checked By	Approved By
RE. 0.1	RCR	2021-12-23	Overall Editing	QB Zhu	Jinliang Sun	Xander Xu
RE.220119	RCR	2022-01-19	Confirm the Content by Project	QB Zhu	Jinliang Sun	Xander Xu
RE.230224	RCR	2023-02-24	Revise Content & update format and content	QB Zhu	Jinliang Sun	Xander Xu
RE.230331	RCR	2023-03-26	Revise part 1, 2.1, 2.4, Content and update format	Xander Xu	Emi Liu	Xander Xu
RE. 240123	RCR	2024-01-23	Revise Content & update format and content	Sylvia Jiang		Xander Xu

Company Info.

 South Seas	South Seas Group (AUS) Pty Ltd	ABN: 57 160 899 749
		TFN: 942 410 285
		ADD: 1/7 Abrams St, Balcatta, WA 6021, Australia
 South Seas 南洋科技	South Seas Industries Pty Ltd	ABN: 85 623 355 082
		TFN: 493 818 715
		ADD: 1/7 Abrams St, Balcatta, WA 6021, Australia
 South Seas 南洋科技	South Seas Technologies (Liaoning) Co., Ltd	CRN: MA10QUAH5
		TRN: 2103 0000 5289 080
		ADD: F5, 5 Keji Road, HT District, Anshan, Liaoning 114051, China
	South Seas Industries (Suzhou) Co., Ltd	CRN: MA275TN85
		TRN: 3205 0600 1240 978
		ADD: F5, C11, 1421 Wuzhong Rd, WZ, Suzhou, Jiangsu 215100, China

Content Table

1.	Company Profile	3
2.	Capability Overviews	4
2.1.	EIC Solutions.....	5
2.2.	System Solutions.....	6
2.3.	Equipment Supply	7
2.4.	Switchroom Solutions	8
2.5.	South Seas Industries	9
3.	Project Management.....	10
4.	Packaging & Transportation	10
5.	Certifications & Qualifications.....	10
6.	Project List	10

1. Company Profile

South Seas was established in 2012, WA Australia, now it became a group of subsidiaries under the holding company Liaoning Zhongxin Automation Control Group (hereafter LZAC).

LZAC was established as a Jointed Venture by Ansteel Group, German and Singaporean investment back in 1990. It was one of the earliest companies to develop EIC solution businesses in Asia, specializes in research and provision of development, system integration, software development, complete solutions in Electrical, Instrumentation, Automation and Switchroom (E-House) across many industries.

South Seas is headquartered in Perth, Australia, regional headquarters in Suzhou and engineering centre in Anshan, China. With over 50 elite professionals focusing on world class deliveries for overseas projects and R&D in Electrical, Instrumentation and Automation solutions. As the backbone, the holding company LZAC employs nearly 200 highly skilled workforce, 90% of whom have university degrees or above. For the last 33 years, it successfully accumulates a wealth of experience in the field of industrial services as a comprehensive solution provider, businesses covering 25 countries in 5 continents including China, Japan, Australia, Sudan, Vietnam, Malaysia, Indonesia, Maldives, Ukraine, France, USA, Chile, Venezuela etc.



South Seas with LZAC has already delivered over one thousand projects internationally, powered by its ownership of 50+ software copyrights and patents developed from the basic automation on process plants to a high-level intelligent facility functional management. Certifications across industrialization and informatization of its self-developed products have been accredited by many organizations, such as 3C, ASTA, AS/NZ, Ausgrid, CE, CNAS, CSIRO, GB, IEC, NATA, UKAS, and Vipac.

South Seas maintains management systems under ISO9001, ISO14001, OHSAS18001 and ISO27001 for transfer its core company value towards our clients --- [Refactor for Better](#).



2. Capability Overviews



Industry Sectors



Mining &
Metallurgy



Energy &
Power



Municipal &
Water



Culture &
sports



Port
Machinery



Petroleum
& Chemical

Major Fields



Intelligent
Application



Electric Control
Equipment



Project
EIC Solution



Network
Expansion



Industrialization
& Informatization Consultation



Professional
Consultation



Key Clients

BHP

Rio Tinto

MMG

MCC
中冶北方工程技术有限公司
Northern Engineering Technology Co., Ltd.

SINOSTEEL

Sydney WATER

MINERAL RESOURCES

FMG Fortescue
The New Force in Iron Ore

CITIC PACIFIC

AGC
An AusGroup Company

thyssenkrupp

ECG ENGINEERING

CLEANTEQ WATER

HOA PHAT
HÒA HỢP CÙNG PHÁT TRIỂN

LEO LITHIUM LTD

FLSMIDTH

DHFI

iFLY DOWNUNDER

ANSTEEL

KARARA MINING LTD

Schneider Electric

CIVMEC

AERISON

Lycopodium

FENNER DUNLOP
CONVEYOR BELTING

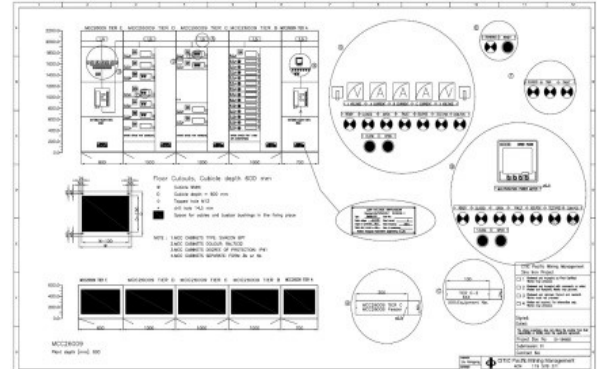
BAIC Group

北汽集团

2.1. EIC Solutions

ENGINEERING

Principle Analysis to Control Philosophy, Functional Design, Detailed Design and Final Drafting. Rigorous engineering process and focus on establishing customer requirements.



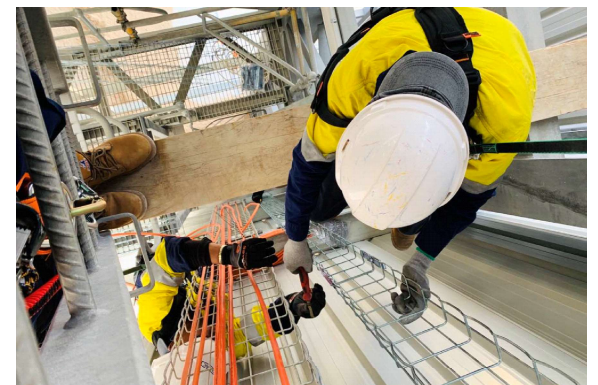
INTEGRATION

SS's technicians are well trained by the product manufacturers in cabinet structure design and installation, with rich experiences in the most of major brands in the market.



SITE SERVICES

With a comprehensive service team to facilitate all types of engineering and technical requirements for the equipment SS has offered.



MAINTENANCE

SS offers a new trend of copilot services to support our client on a 24/7 schedule on both remote and onsite basis. SS premises the best service outcomes empowered by the latest technologies.



2.2. System Solutions

AUTOMATION L1 (HARDWARE)

Schneider PLC



Siemens PLC



AB PLC



GE PLC



Honeywell DCS



Yokogawa DCS

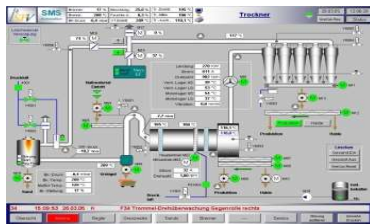


ABB DCS

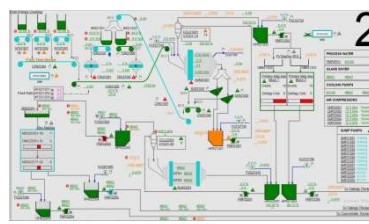


AUTOMATION L2 SCADA&HMI

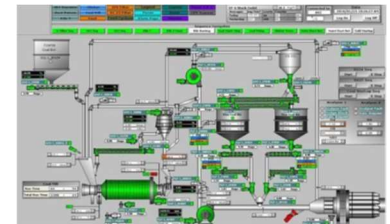
WINCC



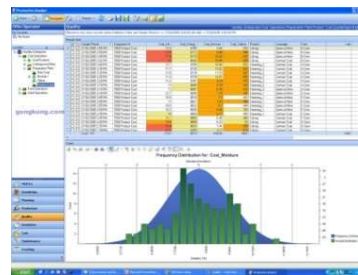
CITECT



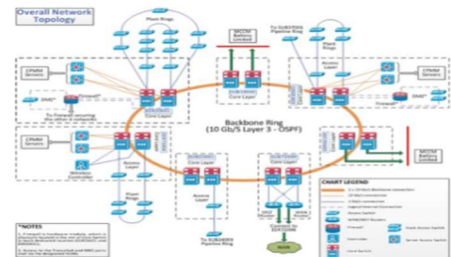
FACTORY TALK



AUTOMATION L3 (MES&ERP)



NETWORK SYSTEM



UNIFIED COMMS SYSTEM

VOICE & VIDEO



EMAILS & APPS



IP PHONE



OTHER SYSTEMS

IP-PA



DATA CENTER



SECURITY



APPS SOFTWARE



2.3. Equipment Supply

ELECTRICAL



LV&MV SWITCHGEAR



17 March 2017

Liaoning Zhongxin Group (Au) Pty Ltd
Unit 3, 285 Lord Street
Perth, WA 6000
Australia



Dear David Macdonald,

Following is a summary of the successful verification tests completed and those still to be verified in accordance with IEC 61439-1 & 2 Ed 2.0 2011 for Liaoning Zhongxin Group (Au) Pty Ltd at Ausgrid Testing & Certification's ASTA accredited Lane Cove Testing Station during January and February 2017 on the 2050 A Air natural ventilated, 415 V / 690 V / 9kV (Un = Ue/U) 50 Hz, IP54, power switchgear and controlgear (PSC) assembly incorporating 3x 120 mm x 10 mm three-phase and 1x 120 mm x 10 mm neutral copper horizontal main busbar system, a vertical 1x 60 x 10 mm three-phase and neutral copper busbar system, an incoming 4000 A ACB unit, three outgoing MCCB feeder units, two outgoing DOL units and a 1x 40 mm x 10 mm protective circuit.

The manufacturer has assigned the following designation: 400 V MCCB Test

The assembly is suitable for indoor use, has a metallic enclosure and comprises the following components:

4000 A ACB Incoming Unit rated at: 4000 A, 415 V, 3 pole, Schneider, Masterpact, type MT40H2, fitted with electronic trip unit Micrologic 6.0E, Un = 1000 V, Uimp = 12 kV, In = 4000 A, Ir = 1 x In, Ics = 15 x In, Icu = 100% Ics, Iou = 85 kA at 690 V, Iow = 85 kA for 1 s

Unit No. 002 100 A MCCB, 4 pole, Schneider type NSX100S, TM 16 D, Ir = 16 A, In = 100 A, Ue = 690 V, Uimp = 8 kV, Ics = 100 kA when Ue = 415 V, Earth-leakage protection: vigi 100I160, Idt = 60 ms, Un = 1 A

Unit No. 003 1000 A Feeder Micrologic 6.0E, In = 1000 A, Ue = 800 V, Uimp = 8 kV, Ue = 415 V, Iou = 150 kA, Ics = 100 % Iou

Unit No. 004 630 A MCCB, 4 pole, Schneider type NSX630S, fitted with electronic trip unit Micrologic 2.3, Io = 630 A, Ir = 1 x Io, Ics = 10 x Ir, Earth-leakage protection: vigi 630, Idt = 60 ms, Un = 1 A

Unit No. 005 250 kW outgoing DOL motor starter 630 A MCCB, 3 pole, Schneider type NSX630S, fitted with electronic trip unit Micrologic 1.3 M, Idt = 6500

Earth-leakage protection: vigi 630, Idt = 60 ms, Un = 1 A
Contactor: Schneider TeSys type LC1F500
Motor controller: Schneider TeSys type LTM08EBO

The Manufacturer has assigned a rated current of 2050A Air Natural / 2500A Ventilated Air Natural 70 K limits / 2500A Air forced with filtered ventilation 80 K limits / and 2770A Air forced with IP4X ventilation without filters 80 K limits. The manufacturer also assigned a rated diversity of 1.0 to the outgoing units, a rated voltage of 415 V (Un), a rated insulation voltage of 690 V (Ui) and a rated impulse voltage of 6 kV (Uimp) to the complete PSC-assembly. The rated operational voltage Ue is the same as the rated voltage Un.

HV SWITCHGEAR

Schneider Electric



Siemens



ABB



VSD/VFD

Schneider



Siemens



ABB



AB



CONTROL



INSTRUMENTNT



2.4. Switchroom Solutions

A prefabricated /
Containerised
walk-in modular
enclosure to house
all relevant
equipment.



Our "portable"
solution along with
skid or wheel-
mounted ready to
operate in the field
with minimum work
and clarifies the
scope for all types
of onsite works.

Applicable Equipment:

- HV/LV Switchboards
- HV/LV VSDs
- DB
- MCC
- PCS
- Instrumentation / COMMs
- UPS / DC Panel
- Fire System, HVAC, Lighting, Ventilation, etc.



Applicable Sectors:

- Mining / Metallurgy
- Power / Energy
- Oil / Chemical
- Ports / Shipping
- Urban Infrastructure
- Entertainment / Sports

2.5. South Seas Industries

South Seas Industries Pty Ltd. (hereinafter referred to as SSI) which was before named Oceania Industrial Co., Ltd. was established in 2017. The company is a subsidiary of South Seas Group (AUS) Pty Ltd., located in Western Australia, with industrial-grade operations and maintenance as its kernel business development, covering the entire Oceania region. Mainly engaged in electrical system design, electrical system integration, electrical system commissioning, electrical system operation and maintenance, mechanical system integration, mechanical system operation and maintenance and other integrated solutions involving many fields.

SSI has top-notch on-site supports, operation and maintenance and technical team, etc. More than 50 people, over 100% of whom have relevant work qualifications. All members have rich work and service experience. Provide professional and targeted technical support and solutions for different fields and deliver professional teams to provide on-site services and supports (operations, maintenance and shut down).

SSI has a first-class project management team that can switch between small projects and large scale. The reason is that the management team of SSI focuses on two aspects, planning system and management system. SSI can provide overall planning solutions, such as cost control, equipment operation status analysis, workload analysis, on-site shutdown maintenance plan, spare parts, and auxiliary materials plan, etc.

Management mechanisms are the main driver of all industry capabilities. When it comes to mining maintenance, a robust management system is an indispensable part of the entire field operation, including human resources, environmental impact, health and safety, mechanical equipment, structure, and pipe network systems. Specific details such as asset management, inventory management, quality management, large equipment maintenance management, risk control, production operations management, occupational health management, etc.



3. Project Management

South Seas will adhere to the attitude of being responsible for the project owner. In addition to adopting the current quality control system of client, it will also strictly supervise and control the design, production, processing, integration and other work involved in the project through the company's years of overseas project experience, especially the accumulated Australian projects, and in combination with the internal quality control process and methods.

For external suppliers and subcontractors, South Seas will adopt a complete supplier management and control system in China and Australia to ensure that the quality and standards of the equipment or systems it provides fully meet the standards and regulations required by the project. The sample documents of our project quality control and management are as follows:

- SS-032111-Project Quality Control Plan-Example
 - SS-032121-Inspection and Testing Plan-Example
 - SS-032011-ITP E-House System-Sample
 - SS-032021-ITP MCC Panel-Sample
 - SS-032031-ITP PLC Panel-Sample
 - SS-032041-ITP VSD Panel-Sample
 - SS-032051-ITP COMMS Panel-Sample
- (Shall Provide only upon request*)

4. Packaging & Transportation

South Seas will deal with the goods according to the project and the national import and export quarantine requirements and the epidemic quarantine requirements. The specific details are as follows:

- SS-033211-Packaging and Shipping Control
- (Shall Provide only upon request*)

5. Certifications & Qualifications

Company license, qualification and certificate details are as follows:

- SS-010311-Certifications & Qualifications
- (Shall Provide only upon request*)

6. Project List

List of Projects details are as follows:

- SS-010211-Project List
- (Shall Provide only upon request*)